



INSTALLATION TRUNKINGS

- made from plastic
- made from halogen-free plastic
- made from sheet steel

GGK is an owner managed German company. In alliance with the sister company WEST-CHEMIE, a manufacturer of PVC granulates, the production process starts with the manufacturing of raw material. Furthermore, **GGK** possesses both the technical process know-how in the extrusion of profiles and a unique innovative product

range. **GGK** has been established on the market of electrical installations for more than 25 years and is nowadays one of the leading European companies and a Specialist in terms of the manufacturing and the distribution of cable management systems made from PVC, halogen-free plastics, aluminium and sheet steel.



LFG / FB Installation trunking systems



BR / MBR Wall trunking systems



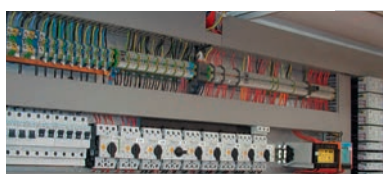
RS Installation pole systems



VVE Prewired units



SL Skirting trunking systems



VK Slotted cable trunking systems



Wide range of accessories

INSTALLATION TRUNKING SYSTEM (plastic / halogen-free)

Purpose of the system and usage recommendation for the MINI and LFG installation trunking system:

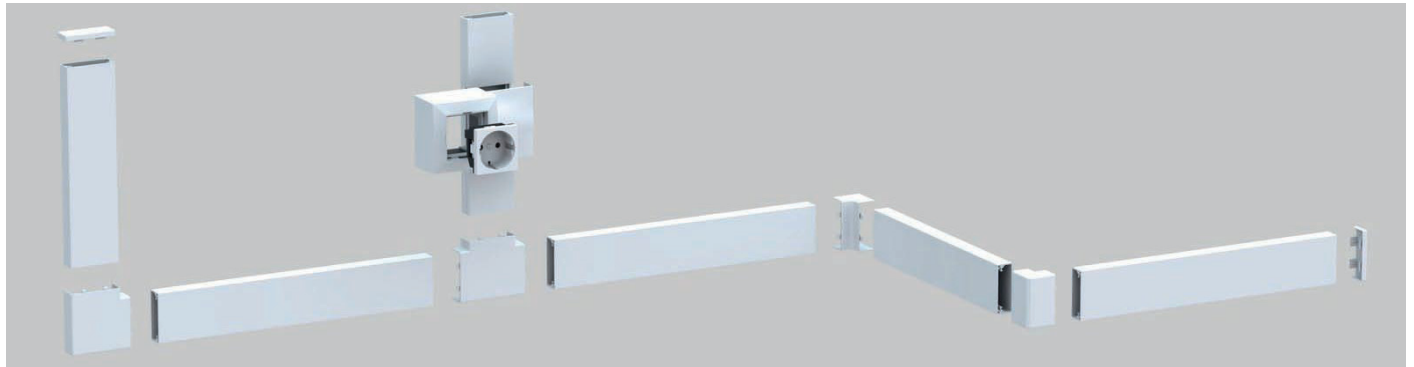
Installation in offices, residential spaces, workshops, warehouses and schools regularly subject to high mechanical loads and with functional interior architectural designs (museums, galleries, doctors' offices).

Mounting properties and system accessories for the MINI and LFG installation trunking system (excerpt of product range):

Base and cover of the trunkings are 2 m in length and the trunking base is perforated. The cover piece covers the base completely and the trunking base is easy to access so there is space for installing the cables. It is possible to change the direction elegantly using products from the full range of accessories. Molded cover parts (inside corners, outside corners, vertical corners, T-pieces) are available to hide cut edges. End pieces can be inserted to obtain a clean look. Colour: pure white (9010); other colours on request.

Device installation / mounting options for the MINI and LFG installation trunking system:

MB modular boxes are available for the use of M45 device modules. MR modular frames are available for the use of M45 device modules.



	Dimension height x width	Colour	Wiring ^A		Set base+cover	Inside corner	Outside corner	End piece	Vertical corner	T-piece	Modular box* M45
			NYM J3x1,5 Ø 9,1mm	CAT 7 (data) Ø 8,0mm							
MINI 10x20 plastic	10x20mm	white 9010	1	1	12413 pack.: 72 m	214523 pack.: 4 pc.	214553 pack.: 4 pc.	214563 pack.: 10 pc.	214573 pack.: 4 pc.	212487 pack.: 10 pc.	16656 pack.: 1 pc.
MINI 10x20 hf halogen-free plastic	10x20mm	white 9010	1	1	4107 pack.: 72 m	14510 pack.: 4 pc.	14511 pack.: 4 pc.	14512 pack.: 10 pc.	14512 pack.: 4 pc.		
MINI 10x30 plastic	10x30mm	white 9010	1	2	11514 pack.: 110 m	14528 pack.: 4 pc.	14558 pack.: 4 pc.	14568 pack.: 10 pc.	14578 pack.: 4 pc.	12107 pack.: 4 pc.	16657 pack.: 1 pc.
LFG 15x15 plastic	14,5x14,5mm	white 9010	1	1	14111 pack.: 80 m	14232 pack.: 10 pc.	14238 pack.: 4 pc.	14198 pack.: 10 pc.	14250 pack.: 4 pc.	12288 pack.: 4 pc.	
LFG 15x30 plastic	17x30mm	white 9010	1	2	11026 pack.: 72 m	14878 pack.: 4 pc.	14883 pack.: 4 pc.	11693 pack.: 10 pc.	14888 pack.: 4 pc.	12297 pack.: 4 pc.	16659 pack.: 1 pc.
LFH 15x30 hf halogen-free plastic	17x30mm	white 9010	1	2	4780 pack.: 72 m	14500 pack.: 4 pc.	14501 pack.: 4 pc.	14501 pack.: 10 pc.	14501 pack.: 4 pc.		
LFG 15x50 plastic	17x50mm	white 9010	3	3	11530 pack.: 50 m	14893 pack.: 4 pc.	14898 pack.: 4 pc.	14807 pack.: 10 pc.	14812 pack.: 4 pc.	16660 pack.: 4 pc.	16658 pack.: 1 pc.
LFG 15x50 t plastic, with two tracks	17x50mm	white 9010	2	2	11526 pack.: 50 m	14893 pack.: 4 pc.	14898 pack.: 4 pc.	14807 pack.: 10 pc.	14812 pack.: 4 pc.	16660 pack.: 4 pc.	16658 pack.: 1 pc.
LFG 20x20 plastic	17x18mm	white 9010	1	1	11025 pack.: 54 m						
LFG 25x25 plastic	25x25mm	white 9010	2	3	12815 pack.: 72 m						
LFG 25x40 plastic	27x40mm	white 9010	4	5	11028 pack.: 40 m	14982 pack.: 4 pc.	14987 pack.: 4 pc.	14992 pack.: 10 pc.	14856 pack.: 4 pc.	13449 pack.: 4 pc.	
LFH 25x40 hf halogen-free plastic	27x40mm	white 9010	4	5	4781 pack.: 40 m	14505 pack.: 4 pc.	14506 pack.: 4 pc.	14507 pack.: 10 pc.	14508 pack.: 4 pc.		
LFG 30x30 plastic	32x30mm	white 9010	4	5	11027 pack.: 50 m	12142 pack.: 4 pc.	12187 pack.: 4 pc.	11826 pack.: 10 pc.	12195 pack.: 4 pc.	12397 pack.: 4 pc.	
LFG 40x40 plastic	40x40mm	white 9010	6	7	11029 pack.: 40 m	11095 pack.: 2 pc.	11855 pack.: 2 pc.	11096 pack.: 10 pc.	11097 pack.: 2 pc.		
LFG 40x60 plastic, incl. 2 cable clips per meter	40x57mm	white 9010	8	10	11030 pack.: 28 m	11114 pack.: 2 pc.	11856 pack.: 2 pc.	11198 pack.: 2 pc.	11170 pack.: 2 pc.		
LFG 40x60 t plastic, incl. 2 cable clips per meter, with two tracks	40x57mm	white 9010	7	9	11060 pack.: 24 m	11114 pack.: 2 pc.	11856 pack.: 2 pc.	11198 pack.: 2 pc.	11170 pack.: 2 pc.		

^A Filling level: 50% · * Device installation: see „Accessories“ · Other colours on request · All indications without engagement, subject to modifications · All pictures and drawings similar

INSTALLATION TRUNKING SYSTEM (plastic)

Purpose of the system and usage recommendation for the FB installation trunking system:

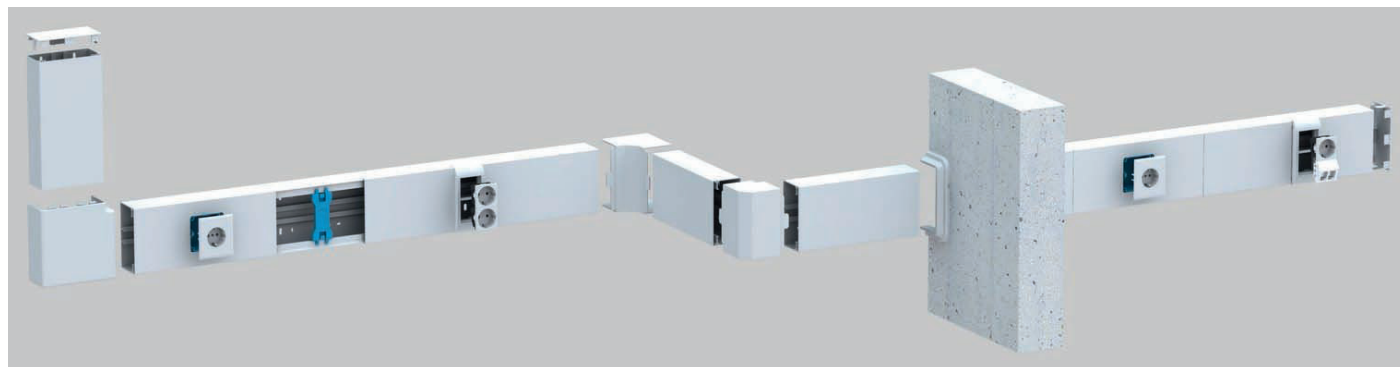
Workstation installations in offices, workshops, warehouses and laboratories regularly subject to high mechanical loads and with functional interior architectural designs (garages, parking ramps, gas stations, basements, hobby rooms).

Mounting properties and system accessories for the FB installation trunking system (excerpt of product range):

Base and cover of the trunkings are 2 m in length, the trunking base is perforated and with a continuously molded DIN rail for the click-mounting of accessory boxes and separation plates to separate the systems. The cover piece covers the base completely and the trunking base is easy to access so there is space for installing the cables. Molded parts (inside corners, outside corners, flat angles) and wall brackets are available. End pieces can be inserted to obtain a clean look. Colour: pure white (9010); other colours on request.

Device installation options for FB installation trunking system:

Trunking height 60mm: Compatible with almost all commercially available switch ranges for flush-mounted installation using standard accessory boxes (single and double) in face plates or for the use of KSE prewired socket units (double and triple). Alternative: MR modular frame for the use of M45 device modules.



	Dimension height x width	Colour	Wiring		Set base+cover	Inside corner	Outside corner	End piece	Vertical corner	Modular frame* M45
			NYM J3x1,5 Ø 9,1mm	CAT 7 (data) Ø 8,0mm						
LFG 40x90 plastic, incl. 2 cable clips per meter	40x90mm	white 9010	11 ^A /6 ^B	16 ^A /7 ^B	11072 pack.: 12 m	11866 pack.: 2 pc.	11870 pack.: 1 pc.	11088 pack.: 2 pc.	11084 pack.: 2 pc.	16652¹ pack.: 1 pc.
LFG 40x110 plastic, incl. 2 cable clips per meter	40x110mm	white 9010	14 ^A /7 ^B	17 ^A /8 ^B	11462 pack.: 12 m	11878 pack.: 2 pc.	11882 pack.: 2 pc.	11890 pack.: 5 pc.	11886 pack.: 1 pc.	16653¹ pack.: 1 pc.
LFG 40x150 plastic, incl. 2 cable clips per meter	40x150mm	white 9010	17 ^A /8 ^B	21 ^A /9 ^B	11810 pack.: 12 m	11487 pack.: 2 pc.	11488 pack.: 2 pc.	11522 pack.: 10 pc.	11872 pack.: 1 pc.	16655² pack.: 1 pc.
LFG 60x60 plastic, incl. 2 cable clips per meter	61x57mm	white 9010	12 ^A	16 ^A	11031 pack.: 16 m	11115 pack.: 2 pc.	11857 pack.: 2 pc.	11199 pack.: 10 pc.	11171 pack.: 2 pc.	
LFG 60x90 plastic, incl. 2 cable clips per meter	61x90mm	white 9010	18 ^A /11 ^B	21 ^A /13 ^B	11032 pack.: 16 m	11116 pack.: 2 pc.	11858 pack.: 2 pc.	11200 pack.: 10 pc.	11172 pack.: 2 pc.	16652¹ pack.: 1 pc.
FB 60x110 plastic, incl. 2 cable clips per meter	62x110mm	white 9010	20 ^A /7 ^C	28 ^A /9 ^C	11033 pack.: 8 m	11117 pack.: 2 pc.	11145 pack.: 2 pc.	11201 pack.: 10 pc.	11173 pack.: 2 pc.	16653¹ pack.: 1 pc.
FB 60x130 plastic, incl. 2 cable clips per meter	62x130mm	white 9010	26 ^A /10 ^C	32 ^A /12 ^C	11034 pack.: 10 m	11118 pack.: 2 pc.	11146 pack.: 2 pc.	11202 pack.: 10 pc.	11174 pack.: 2 pc.	16654² pack.: 1 pc.
FB 60x150 plastic, incl. 2 cable clips per meter	62x150mm	white 9010	28 ^A /12 ^C	35 ^A /15 ^C	11035 pack.: 8 m	11119 pack.: 2 pc.	11147 pack.: 2 pc.	11203 pack.: 10 pc.	11175 pack.: 2 pc.	16655² pack.: 1 pc.
FB 60x200 plastic, incl. 2 cable clips per meter	62x190mm	white 9010	36 ^A /20 ^C	49 ^A /23 ^C	11036 pack.: 8 m	11120 pack.: 2 pc.	11148 pack.: 2 pc.	11204 pack.: 10 pc.	11176 pack.: 2 pc.	
FB 60x230 plastic, incl. 2 cable clips per meter	62x230mm	white 9010	48 ^A /25 ^C	52 ^A /28 ^C	11066 pack.: 8 m	11798 pack.: 1 pc.	14112 pack.: 1 pc.	14113 pack.: 10 pc.	14114 pack.: 1 pc.	
FB 80x150 plastic, incl. 2 cable clips per meter	80x150mm	white 9010	42 ^A	50 ^A	11492 pack.: 8 m	11894 pack.: 2 pc.	14119 pack.: 2 pc.	14120 pack.: 5 pc.	14121 pack.: 2 pc.	16655² pack.: 1 pc.
FB 100x230 plastic, incl. 2 cable clips per meter	100x230mm	white 9010	80 ^A	85 ^A	11093 pack.: 4 m	14115 pack.: 2 pc.	14116 pack.: 2 pc.	14117 pack.: 2 pc.	14118 pack.: 2 pc.	

^A Filling level: 50% · ^B Filling level (50%) with MR modular frame · ^C Filling level (50%) with accessory box (GED) · * Device installation: see „Accessories“ · Other colours on request · All indications without engagement, subject to modifications.

¹ for 1 M45 device · ² for 2 M45 devices · All pictures and drawings similar

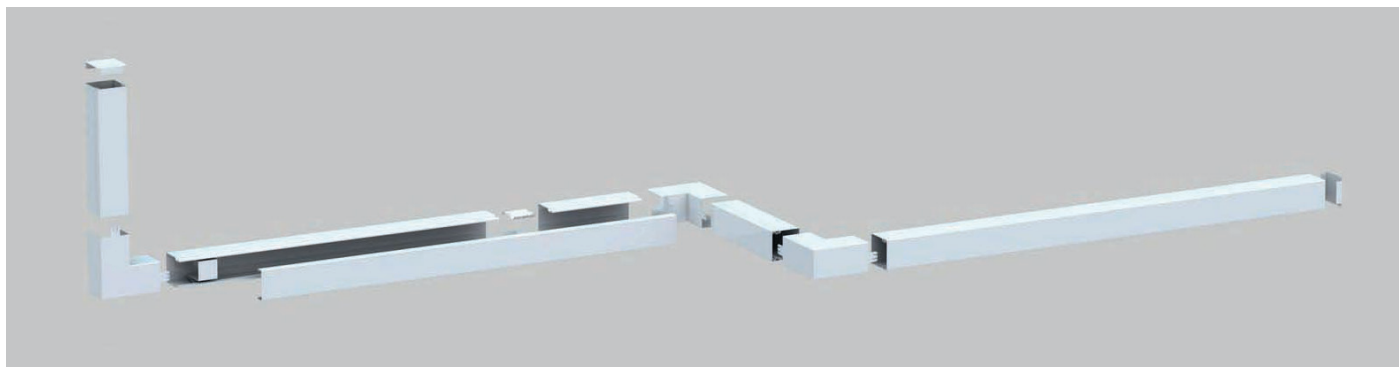
INSTALLATION TRUNKING SYSTEM (sheet steel)

Purpose of the system and usage recommendation for MINI/s and LFS installation trunking system made of sheet steel:

Installation to reduce the fire load in workshops, warehouses, sports facilities and schools with functional interior architectural designs (garages, parking ramps, industries) regularly subject to high mechanical loads.

Mounting properties and system accessories for the MINI/s and LFS installation trunking system made of sheet steel (excerpt of product range):

Base and cover of the trunkings are 2 m in length and the trunking base is without perforation. The cover piece covers the base completely and the trunking base is easy to access so there is space for installing the cables. It is possible to change the direction elegantly using products from the full range of accessories. Molded cover parts (inside corners, outside corners, vertical corners) are available to hide cut edges. End pieces can be inserted to obtain a clean look. Grounding straps for equipotential bonding (grounding cables must be ordered separately) and cable clips. Available in pure white (9010) as well as in any other RAL colour. Also suitable for painting over. On request available with perforated base and / or welded separation plate.



	Dimension height x width	Colour	Wiring ^A		Set base+cover	Inside corner	Outside corner	End piece	Vertical corner	T-piece	Cable clip
			NYM J3x1,5 Ø 9,1mm	NYM J5x1,5 Ø 10,8mm							
MINI/s 15x15 with base perforation	15x15mm	coated in white 9010	1	1	24600 pack.: 50 m	14232* pack.: 10 pc.	14238* pack.: 4 pc.	14198* pack.: 10 pc.	14250* pack.: 4 pc.	12288* pack.: 4 pc.	
MINI/s 15x15 with base perforation	15x15mm	hot dip coated	1	1	4600 pack.: 50 m	4229* pack.: 10 pc.	4235* pack.: 4 pc.	4195* pack.: 10 pc.	4247* pack.: 4 pc.	2284* pack.: 4 pc.	
MINI/s 15x30 with base perforation	15x30mm	coated in white 9010	2	1	24605 pack.: 30 m	14878* pack.: 4 pc.	14883* pack.: 4 pc.	11693* pack.: 10 pc.	14888* pack.: 4 pc.	12297* pack.: 4 pc.	
MINI/s 15x30 with base perforation	15x30mm	hot dip coated	2	1	4605 pack.: 30 m	4874* pack.: 4 pc.	4879* pack.: 4 pc.	1557* pack.: 10 pc.	4884* pack.: 4 pc.	2289* pack.: 4 pc.	
MINI/s 30x30 with base perforation	30x30mm	coated in white 9010	4	2	24610 pack.: 32 m	24611 pack.: 5 pc.	24612 pack.: 5 pc.	24614 pack.: 20 pc.	24613 pack.: 5 pc.	24617 pack.: 10 pc.	
MINI/s 30x30 with base perforation	30x30mm	hot dip coated	4	2	4610 pack.: 32 m	4611 pack.: 5 pc.	4612 pack.: 5 pc.	4614 pack.: 20 pc.	4613 pack.: 5 pc.	4617 pack.: 10 pc.	
LFS 40x40	40x40mm	coated in white 9010	6	4	2748 pack.: 12 m	2749 pack.: 5 pc.	2750 pack.: 5 pc.	2752 pack.: 20 pc.	2751 pack.: 5 pc.		
LFS 40x40	40x40mm	hot dip coated	6	4	2742 pack.: 12 m	2743 pack.: 5 pc.	2744 pack.: 5 pc.	2746 pack.: 20 pc.	2745 pack.: 5 pc.		
LFS 40x60	40x60mm	coated in white 9010	9	7	2301 pack.: 12 m	2311 pack.: 5 pc.	2321 pack.: 5 pc.	2341 pack.: 20 pc.	2331 pack.: 5 pc.		
LFS 40x60	40x60mm	hot dip coated	9	7	2300 pack.: 12 m	2310 pack.: 5 pc.	2320 pack.: 5 pc.	2340 pack.: 20 pc.	2330 pack.: 5 pc.		
LFS 60x60	60x60mm	coated in white 9010	14	10	2303 pack.: 8 m	2313 pack.: 5 pc.	2323 pack.: 5 pc.	2343 pack.: 20 pc.	2333 pack.: 5 pc.		2950 pack.: 100 pc.
LFS 60x60	60x60mm	hot dip coated	14	10	2302 pack.: 8 m	2312 pack.: 5 pc.	2322 pack.: 5 pc.	2342 pack.: 20 pc.	2332 pack.: 5 pc.		2950 pack.: 100 pc.

^A Filling level: 50% - * accessories MINI/s 15x15 and MINI/s 15x30 made from plastic - Other colours on request - All indications without engagement, subject to modifications - All pictures and drawings similar

INSTALLATION TRUNKING SYSTEM (sheet steel)

Purpose of the system and usage recommendation for the LFS / FBS installation trunking system made of sheet steel:

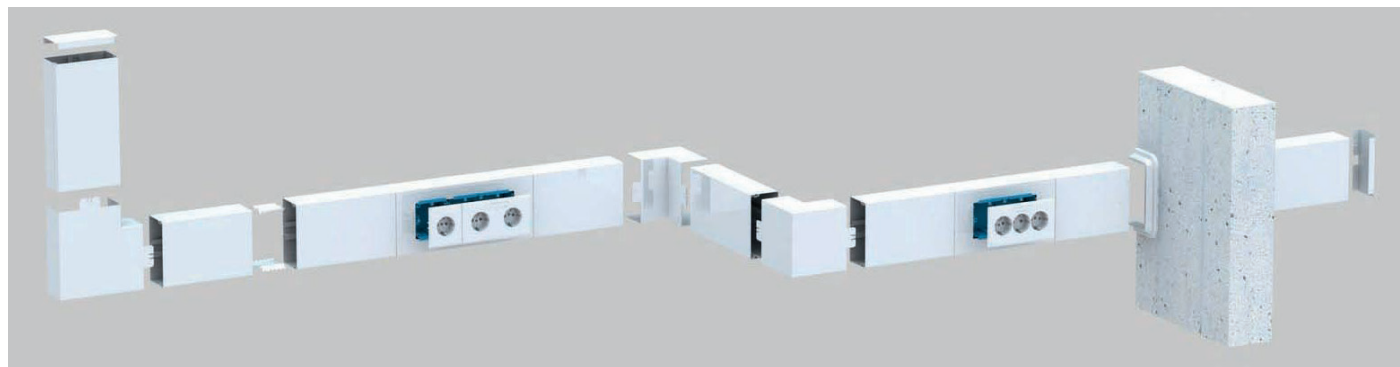
Installation to reduce the fire load in offices, workshops, warehouses and laboratories with functional interior architectural designs (garages, parking ramps, gas stations, basements, hobby rooms) regularly subject to high mechanical loads.

Mounting properties and system accessories for the LFS / FBS installation trunking system made of sheet steel (excerpt of product range):

LFS: Base and cover of the trunkings are 2 m in length. The cover piece covers the base completely and the trunking base is easy to access so there is space for installing the cables. It is possible to change the direction elegantly using products from the full range of accessories. Molded cover parts (inside corners, outside corners, vertical corners) are available to hide cut edges. End pieces can be inserted to obtain a clean look. Grounding straps for equipotential bonding (grounding cables must be ordered separately) and cable clips. Available in pure white (9010) as well as in any other RAL colour. Also suitable for painting over. On request available with perforated base and / or welded separation plate. FBS: Like the LFS, but also with a welded DIN mounting rail for inserting a separation plate and / or for installing devices.

Device installation options for the FBS cable trunking system made of sheet steel:

FBS: Compatible with almost all commercially available switch ranges for flush-mounted installation using standard accessory boxes (single and double) in face plates or for the use of KSE prewired socket units (double and triple) on a DIN mounting rail.



	Dimension height x width	Colour	Wiring		Set base+cover	Inside corner	Outside corner	End piece	Vertical corner	Cable clip
			NYM J3x1,5 Ø 9,1mm	NYM J5x1,5 Ø 10,8mm						
LFS 60x100	60x100mm	coated in white (9010)	26 ^A	17 ^A	2305 pack.: 4 m	2315 pack.: 2 pc.	2325 pack.: 2 pc.	2345 pack.: 10 pc.	2335 pack.: 2 pc.	2951 pack.: 100 pc.
LFS 60x100	60x100mm	hot dip coated	26 ^A	17 ^A	2304 pack.: 4 m	2314 pack.: 2 pc.	2324 pack.: 2 pc.	2344 pack.: 10 pc.	2334 pack.: 2 pc.	2951 pack.: 100 pc.
FBS 60x100 with welded mounting rail	60x100mm	coated in white (9010)	26 ^A /7 ^B	17 ^A /4 ^B	2351 pack.: 4 m	2315 pack.: 2 pc.	2325 pack.: 2 pc.	2345 pack.: 10 pc.	2335 pack.: 2 pc.	2951 pack.: 100 pc.
LFS 60x130	60x130mm	coated in white (9010)	32 ^A	24 ^A	7992 pack.: 4 m	2853 pack.: 2 pc.	2854 pack.: 2 pc.	2856 pack.: 10 pc.	2855 pack.: 2 pc.	2952 pack.: 100 pc.
LFS 60x130	60x130mm	hot dip coated	32 ^A	24 ^A	7990 pack.: 4 m	2847 pack.: 2 pc.	2848 pack.: 2 pc.	2850 pack.: 10 pc.	2849 pack.: 2 pc.	2952 pack.: 100 pc.
FBS 60x130 with welded mounting rail	60x130mm	coated in white (9010)	32 ^A /13 ^B	24 ^A /9 ^B	2852 pack.: 4 m	2853 pack.: 2 pc.	2854 pack.: 2 pc.	2856 pack.: 10 pc.	2855 pack.: 2 pc.	2952 pack.: 100 pc.
LFS 60x150	60x150mm	coated in white (9010)	38 ^A	30 ^A	2307 pack.: 4 m	2317 pack.: 2 pc.	2327 pack.: 2 pc.	2347 pack.: 10 pc.	2337 pack.: 2 pc.	2953 pack.: 100 pc.
LFS 60x150	60x150mm	hot dip coated	38 ^A	30 ^A	2306 pack.: 4 m	2316 pack.: 2 pc.	2326 pack.: 2 pc.	2346 pack.: 10 pc.	2336 pack.: 2 pc.	2953 pack.: 100 pc.
FBS 60x150 with welded mounting rail	60x150mm	coated in white (9010)	38 ^A /17 ^B	30 ^A /11 ^B	2353 pack.: 4 m	2317 pack.: 2 pc.	2327 pack.: 2 pc.	2347 pack.: 10 pc.	2337 pack.: 2 pc.	2953 pack.: 100 pc.
LFS 60x200	60x200mm	coated in white (9010)	45 ^A	38 ^A	2309 pack.: 4 m	2319 pack.: 2 pc.	2329 pack.: 2 pc.	2349 pack.: 10 pc.	2339 pack.: 2 pc.	2954 pack.: 100 pc.
LFS 60x200	60x200mm	hot dip coated	45 ^A	38 ^A	2308 pack.: 4 m	2318 pack.: 2 pc.	2328 pack.: 2 pc.	2348 pack.: 10 pc.	2338 pack.: 2 pc.	2954 pack.: 100 pc.
FBS 60x200 with welded mounting rail	60x200mm	coated in white (9010)	45 ^A /27 ^B	38 ^A /18 ^B	2355 pack.: 4 m	2319 pack.: 2 pc.	2329 pack.: 2 pc.	2349 pack.: 10 pc.	2339 pack.: 2 pc.	2954 pack.: 100 pc.
LFS 60x230	60x230mm	coated in white (9010)	62 ^A	40 ^A	2808 pack.: 4 m	2809 pack.: 2 pc.	2810 pack.: 2 pc.	2812 pack.: 10 pc.	2811 pack.: 2 pc.	2955 pack.: 100 pc.
LFS 60x230	60x230mm	hot dip coated	62 ^A	40 ^A	2802 pack.: 4 m	2803 pack.: 2 pc.	2804 pack.: 2 pc.	2806 pack.: 10 pc.	2805 pack.: 2 pc.	2955 pack.: 100 pc.
FBS 60x230 with welded mounting rail	60x230mm	coated in white (9010)	62 ^A /34 ^B	40 ^A /22 ^B	2882 pack.: 4 m	2809 pack.: 2 pc.	2810 pack.: 2 pc.	2812 pack.: 10 pc.	2811 pack.: 2 pc.	2955 pack.: 100 pc.

ACCESSORIES (selected)

M45 DEVICE INSTALLATION

for MB **Modular box**
for MR **Modular frame**

	Description	Dimension	Colour	Art. no
	M45 SCHUKO socket, (16A, 250V), double pole, single, 33° inclined, with clamp terminals	45x45mm	white	6964 pack.: 1 pc.
	M45 SCHUKO socket, (16A, 250V), double pole, single, vertically aligned, with clamp terminals	45x45mm	white	6960 pack.: 1 pc.
	M45 Keystone-Adapter, double hole	45x45mm	white	6631 pack.: 1 pc.
	M45 Systimax-Adapter, double hole, with label field	45x45mm	white	6636 pack.: 1 pc.

M45 DEVICE INSTALLATION

for MB **Modular box**
for MR **Modular frame**

	Description	Dimension	Colour	Art. no
	M45 Toggle switch (16A, 250V), 2-way switch, single pole, with clamp terminals	45x45mm	white	6989 pack.: 1 pc.
	M45 Rocker switch (16A, 250V), 1-way switch, double pole, with clamp terminals	45x45mm	white	7026 pack.: 1 pc.
	M45 Pushbutton (16A, 250V), 2-way pushbutton, single pole, with clamp terminals	45x45mm	white	7029 pack.: 1 pc.
	M45 Roller shutter rocker switch (10A, 250V), with electrical and mechanical interlocking, single pole, with clamp terminals	45x45mm	white	7025 pack.: 1 pc.

SEPARATION PLATES

	Description	Dimension	Colour	Art. no
	Separation plate 40, for PVC trunkings with 40mm height, starting with LFG 40x90	40mm	not defined	1360 pack.: 100m
	Separation plate 60, for PVC trunkings with 60mm height, starting with LFG 60x60	60mm	not defined	1260 pack.: 100m
	Separation plate 60 extra, for PVC trunkings with 60mm height, for middle division, starting with FB 60x110	60mm	not defined	1456 pack.: 50m

ACCESSORY BOXES

	Description	Dimension	Colour	Art. no
	GED 50 accessory box, single hole, floor-mounted, for standard 80mm devices, for FB and FBS installation trunkings	80x80mm	blue	1261 pack.: 40 pc.
	GED 50/2 accessory box, double hole, floor-mounted, for standard 80mm devices, for FB and FBS installation trunkings	80x80mm	blue	1280 pack.: 20 pc.

GROUNDING MATERIAL

	Description	Dimension	Colour	Art. no
	Grounding strip with cable lug, 300mm length, for trunkings made from sheet steel		not defined	1640 pack.: 50 pc.
	USV 60 universal joint and grounding clip connector, made from spring steel, for steel trunkings with 60mm height		not defined	2959 pack.: 20 pc.

PREWIRED SOCKET UNITS

	Description	Dimension	Colour	Art. no
	KSE 50/Dialog-2 prewired socket unit, double SCHUKO, incl. label field, for FB / FBS installation trunkings	80x80mm	white	21280 pack.: 4pc.
	KSE 50/Dialog-3 prewired socket unit, triple SCHUKO, incl. label field, for FB / FBS installation trunkings	80x80mm	white	31280 pack.: 4pc.

FURTHER ACCESSORIES ON REQUEST



- Leading specialist in plastic and metal cable management systems
- Owner managed, group-independent company
- Modern production plant
- Environmentally friendly, resource-efficient production
- Own, innovative product development



- High product availability from stock
- Wide variety of national and international certificates
- Certification according to ISO 9001:2008 
- High quality products „Made in Germany“
- Over 25 years of experience



GGK GmbH & Co. KG

Gerhard-Grün-Str. 1
35753 Greifenstein-Beilstein
Germany

Phone: +49 (0) 2779 / 915-0

Fax +49 (0) 2779 / 915-122

e-mail: export@ggk-online.com

Internet: www.ggk-online.com