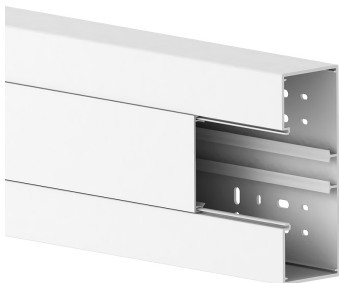


Date: 24.04.2026

Wall trunking BR 60x170/80-9010, PVC, base and cover, 80 mm cover, pure white



Product description

Wall duct made of PVC to DIN EN 50085-2-1 for cable laying directly on the wall or on wall brackets, 80 mm cover for device installation of commercially available switch ranges in combination with accessory mounting boxes or M45 built-in devices with the aid of front-locking adapter frames, base with four-row base perforation for fastening and a DIN rail for snap-in mounting of a plastic partition for separating cables. Four BR easy cavity wall box adapters for the installation of standard cavity wall boxes with a maximum installation depth of 50 mm are included free of charge with each packaging unit. Couplings as mounting aids and for easy connection of two bases are additionally available as accessories. **Note:** Sound and fire protection measures must be carried out professionally.

Basic data

Item number	18040
Product group	20-Wall installation
Packing unit	8 meters
EAN code	4018475268234
Tariff number	39259020

Technical features

Width	170 mm
Depth	62 mm
Length	2000 mm
Number of covers	1
Covers supplied with the product	yes
Cover width 1	80 mm
Symmetric	yes
Construction type rectangular	yes
Material	plastic
Material quality	Polyvinyl chloride (PVC)
Halogen free	no
Anti-bacterial treatment	no
Surface protection	untreated
Colour	white
RAL-number	9010
Construction rear wall (inner side)	Continuous DIN-rail
With protective foil	yes
Number of plug-in partitions	1
With duct connector	no
Mounting perforation in bottom	yes
Mounting method cover	Inner lying
With cable fixing clip	no
Useful cross section	8800 mm ²
Degree of protection (IP)	IP30
Impact strength	IK10

Operating temperature

from -5 to 60 °C