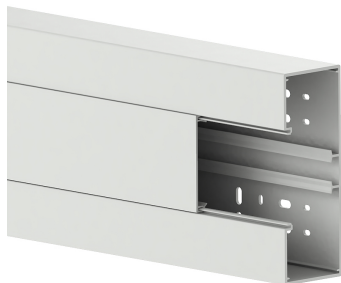


Date: 09.05.2025

Wall trunking BR 60x170/80-7035, PVC, base and cover, 80 mm cover, light grey



Product description

Wall duct made of PVC to DIN EN 50085-2-1 for cable laying directly on the wall or on wall brackets, 80 mm cover for device installation of commercially available switch ranges in combination with accessory mounting boxes or M45 built-in devices with the aid of front-locking adapter frames, base with four-row base perforation for fastening and a DIN rail for snap-in mounting of a plastic partition for separating cables. Couplings as mounting aids and for easy connection of two bases are additionally available as accessories. Note: Sound and fire protection measures must be carried out professionally.

Basic data

Item number	12805
Product group	20-Wall installation
Packing unit	8 meters
EAN code	4018475270329
Tariff number	39259020

Technical features

Width	170 mm
Depth	62 mm
Length	2000 mm
Number of covers	1
Covers supplied with the product	yes
Cover width 1	80 mm
Symmetric	yes
Construction type rectangular	yes
Material	plastic
Halogen free	no
Colour	light grey
RAL-number	7035
Construction rear wall (inner side)	continuous DIN-rail
With protective foil	yes
Number of plug-in partitions	1
Mounting perforation in bottom	yes
Mounting method cover	inner lying
Useful cross section	8800 mm ²