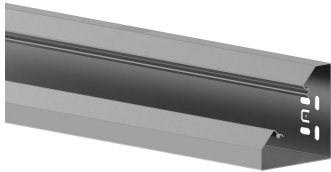


Date: 01.12.2025

Wall trunking-base MBRS 80x80, steel, 45 mm cover, zinc



Product description

Base of wall duct made of sheet steel to DIN EN 50085-2-1 for cable routing directly on the wall or on wall brackets, for an internal 45 mm cover for device installation of compact M45 built-in devices in the 45x45 mm format, base with double-row base perforation for fastening, a retaining lug for suspending a partition wall for separating cables and earthing lugs for additional equipotential bonding by means of earthing cable. Note: Potential equalisation, earthing, sound and fire protection measures must be carried out professionally. Bottom and cover with self-grounding contact surfaces.

Basic data

Item number	6880
Product group	20-Wall installation
Packing unit	6 meters
EAN code	4018475251618
Tariff number	73089059

Technical features

Width	80 mm
Depth	80 mm
Length	2000 mm
Number of covers	1
Covers supplied with the product	no
Cover width 1	45 mm
Symmetric	yes
Construction type rectangular	yes
Material	steel
Halogen free	yes
Surface protection	pre-galvanised
Colour	other
Construction rear wall (inner side)	with cam clamps
With protective foil	no
Number of plug-in partitions	1
Mounting perforation in bottom	yes
Mounting method cover	inner lying
Useful cross section	4150 mm ²