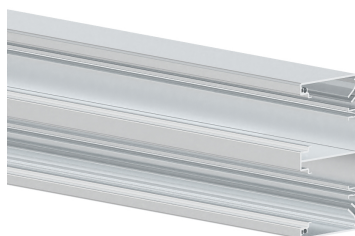


Date: 27.06.2025

## Wall trunking-base MBRA 65x130, aluminium, 2x 45 mm cover, anodised



### Product description

Base of wall duct made of aluminium to DIN EN 50085-2-1 for cable routing directly on the wall or on wall brackets, for two internal 45 mm Cover for device installation of compact M45 built-in devices in 45x45 mm format, base part with fixed partition, two mounting rails for snap-in mounting of a partition for separating cables and earthing grooves for equipotential bonding by means of earthing cable. Couplings as assembly aids and for easy connection of two lower sections are additionally available as accessories. Note: Potential equalisation, earthing, sound and fire protection measures must be carried out professionally.

### Basic data

Item number	18205
Product group	20-Wall installation
Packing unit	8 meters
EAN code	4018475277939
Tariff number	76109090

### Technical features

Width	130 mm
Depth	65 mm
Length	2000 mm
Number of covers	2
Covers supplied with the product	no
Cover width 1	45 mm
Cover width 2	45 mm
Symmetric	yes
Construction type rectangular	no
Material	aluminium
Halogen free	yes
Surface protection	anodised
Colour	silver
Construction rear wall (inner side)	continuous DIN-rail
With protective foil	no
Number of plug-in partitions	2
Mounting perforation in bottom	yes
Mounting method cover	inner lying
Useful cross section	7316 mm <sup>2</sup>