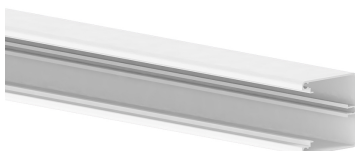


Date: 24.04.2026

## Wall trunking-base MBRA 62x62-9010, aluminium, 45 mm cover, pure white



### Product description

Base of wall duct made of aluminium to DIN EN 50085-2-1 for cable routing directly on the wall or on wall brackets, 45 mm cover for device installation of compact M45 built-in devices in 45x45 mm format, base with mounting rail for snap-in mounting of a partition wall for separating cables and earthing grooves for equipotential bonding by means of earthing cable. Connecting pins as mounting aids and for easy connection of two bases are additionally available as accessories. **Note:** Potential equalisation, earthing, sound and fire protection measures must be carried out professionally.

### Basic data

Item number	18201
Product group	20-Wall installation
Packing unit	8 meters
EAN code	4018475277915
Tariff number	76109090

### Technical features

Width	62 mm
Depth	62 mm
Length	2000 mm
Number of covers	1
Covers supplied with the product	no
Cover width 1	45 mm
Symmetric	yes
Construction type rectangular	no
Material	aluminium
Material quality	other
Halogen free	yes
Anti-bacterial treatment	no
Surface protection	coated
Colour	white
RAL-number	9010
Construction rear wall (inner side)	Continuous DIN-rail
With protective foil	no
Number of plug-in partitions	1
With duct connector	no
Mounting perforation in bottom	no
Mounting method cover	Inner lying
With cable fixing clip	yes
Useful cross section	3454 mm <sup>2</sup>
Degree of protection (IP)	IP30
Impact strength	IK07
Operating temperature	from -5 to 60 °C