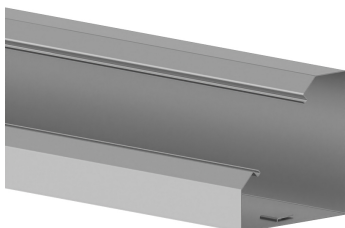


Date: 24.04.2026

Wall trunking-base BRS 120x120, steel, 80 mm cover, zinc



Product description

Base of wall duct made of sheet steel to DIN EN 50085-2-1 for cable routing directly on the wall or on wall brackets, for an 80 mm cover for device installation of commercially available switch ranges in combination with front-locking accessory mounting boxes or M45 built-in devices with the aid of front-locking adapter frames, base part with double-row floor perforation for fastening, a retaining lug for hanging a partition wall for separating cables and earthing lugs for additional equipotential bonding by means of earthing cable. **Note:** Potential equalisation, earthing, sound and fire protection measures must be carried out professionally. Bottom and cover with self-grounding contact surfaces.

Basic data

Item number	24005
Product group	20-Wall installation
Packing unit	4 meters
EAN code	4018475276505
Tariff number	73089059

Technical features

Width	120 mm
Depth	120 mm
Length	2000 mm
Number of covers	1
Covers supplied with the product	no
Cover width 1	80 mm
Symmetric	yes
Construction type rectangular	no
Material	Steel
Material quality	other
Halogen free	yes
Anti-bacterial treatment	no
Surface protection	continuously galvanised
Colour	zinc
Construction rear wall (inner side)	With cam clamps
With protective foil	no
Number of plug-in partitions	1
With duct connector	no
Mounting perforation in bottom	yes
Mounting method cover	Inner lying
With cable fixing clip	no
Useful cross section	10458 mm ²
Degree of protection (IP)	IP30
Impact strength	IK10
Operating temperature	from -5 to 60 °C