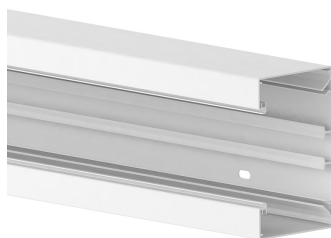


Date: 14.02.2026

Wall trunking-base BRA 80x130-9010, aluminium, 80 mm cover, pure white



Product description

Aluminium trunking base to DIN EN 50085-2-1 for cable routing directly on the wall or on wall brackets, for an 80 mm cover for device installation of commercially available switch ranges in combination with accessory mounting boxes or M45 built-in devices with the aid of front-locking adapter frames, base part with five-row base perforation for fastening, a DIN rail for snap-in mounting of a plastic partition wall for separating cables and earthing grooves for equipotential bonding by means of earthing cable. Couplings as mounting aids and for easy connection of two base units are additionally available as accessories. Note: Potential equalisation, earthing, sound and fire protection measures must be carried out professionally.

Basic data

Item number	18148
Product group	20-Wall installation
Packing unit	8 meters
EAN code	4018475271722
Tariff number	76109090

Technical features

Width	130 mm
Depth	80 mm
Length	2000 mm
Number of covers	1
Covers supplied with the product	no
Cover width 1	80 mm
Symmetric	yes
Construction type rectangular	yes
Material	aluminium
Halogen free	yes
Surface protection	coated
Colour	other
Construction rear wall (inner side)	continuous DIN-rail
With protective foil	no
Number of plug-in partitions	1
Mounting perforation in bottom	yes
Mounting method cover	inner lying
Useful cross section	9984 mm ²