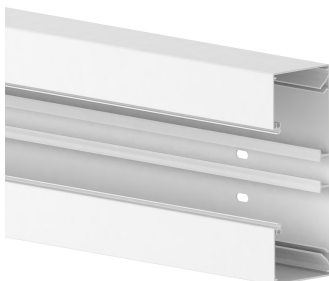


Date: 24.04.2026

Wall trunking-base BRA 60x170-9010, aluminium, 80 mm cover, pure white



Product description

Aluminium trunking base to DIN EN 50085-2-1 for cable routing directly on the wall or on wall brackets, for an 80 mm cover for device installation of commercially available switch ranges in combination with accessory mounting boxes or M45 built-in devices with the aid of front-locking adapter frames, base part with five-row base perforation for fastening, a DIN rail for snap-in mounting of a plastic partition wall for separating cables and earthing grooves for equipotential bonding by means of earthing cable. Couplings as mounting aids and for easy connection of two base units are additionally available as accessories. **Note:** Potential equalisation, earthing, sound and fire protection measures must be carried out professionally.

Basic data

Item number	18145
Product group	20-Wall installation
Packing unit	8 meters
EAN code	4018475271692
Tariff number	76109090

Technical features

Width	170 mm
Depth	62 mm
Length	2000 mm
Number of covers	1
Covers supplied with the product	no
Cover width 1	80 mm
Symmetric	yes
Construction type rectangular	yes
Material	aluminium
Material quality	other
Halogen free	yes
Anti-bacterial treatment	no
Surface protection	coated
Colour	white
RAL-number	9010
Construction rear wall (inner side)	Continuous DIN-rail
With protective foil	no
Number of plug-in partitions	1
With duct connector	no
Mounting perforation in bottom	yes
Mounting method cover	Inner lying
With cable fixing clip	no
Useful cross section	9464 mm ²
Degree of protection (IP)	IP30
Impact strength	IK07

Operating temperature

from -5 to 60 °C