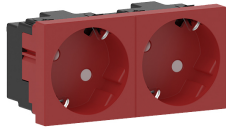


Date: 24.04.2026

## Socket double 45° M45-2W-3001, 45x45mm with enhanced contact protection, red



### Product description

Double socket outlet, 45° angled, cable connection via plug-in terminals, 2-pole, 16 A/250 V~, with connection terminals to VDE 0620, suitable for 2 angled or flat plugs, with increased protection against accidental contact to VDE 0620, for installation in wall trunking and service poles with 45 mm top section and all mounting frames/device carriers for accommodating compact M45 built-in devices, for vertical device installation.

### Basic data

Item number	6941
Product group	40-Installation devices
Packing unit	1 piece
EAN code	4018475265059
Tariff number	85366990

### Technical features

Model	Earthing pin
With signal lamp	no
Imprint/indication	other
Connection type	push-in clamp
With hinged lid	no
With enhanced contact protection	yes
Label space/information surface	no
Colour	red
RAL-number (similar)	3003
Transparent	no
With function lighting	no
With orientation lighting	no
Special power supply	other
Mounting method	wall duct
Type of fastening	Snap mounting (engagement)
Material	plastic
Material quality	Thermoplastic
Halogen free	no
Surface protection	untreated
Surface finishing	Matt
Nominal current	16 A
Nominal voltage	250 V
Suitable for degree of protection (IP)	other
Impact strength	other
Width of device	90 mm
Height of device	45 mm
Depth of device	40 mm

Compatible with Apple HomeKit	no
Compatible with Google Assistant	no
Compatible with Amazon Alexa	no
Colour of switch operator	red
Mounting direction	Vertical
Number of ports USB-A	0
Number of socket outlets	2
With Wi-Fi signal repeater	no
With built-in bluetooth speaker	no
Compliant with UK Building Regulations Part M	no