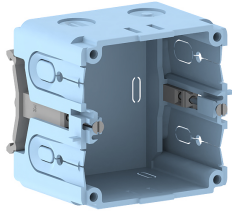


Date: 24.04.2026

## Junction box for wall duct single GED 50-1 for BR/BRA/FB height 60mm with DIN-rail



### Product description

Halogen-free flush-mounting box for accommodating a commercially available device unit from the standard switch range, with strain-relief feed openings for cable diameters of 7-11mm and 11-13mm, for installation in wall trunking and installation trunking with a DIN rail and a height of 60 mm.

### Basic data

Item number	1261
Product group	20-Wall installation
Packing unit	40 pieces
EAN code	4018475012615
Tariff number	39269097

### Technical features

Number of units	1
Mounting method box	rear panel
Model	open
Type of device	other
Mounting track	83.5 mm
Mounting method installation unit	crew
Strain relief possibility	yes
With connection space	no
Material	plastic
Halogen free	no