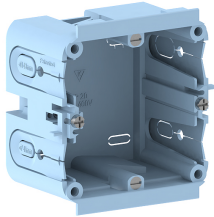


Date: 24.04.2026

## Junction box for wall duct single GDX/P-1 front-locking for BR/BRA/BRS



### Product description

Halogen-free flush-mounting box for accommodating a commercially available device unit from the standard switch range, with strain-relief feed openings for cable diameters of 7-11mm and 11-13mm, for installation in wall trunking with a 76.5 mm wide fixing track.

### Basic data

Item number	3677
Product group	20-Wall installation
Packing unit	40 pieces
EAN code	4018475228412
Tariff number	39269097

### Technical features

Number of units	1
Mounting method box	front
Model	open
Type of device	other
Mounting track	83.5 mm
Mounting method installation unit	crew
Strain relief possibility	yes
Material	plastic
Halogen free	no