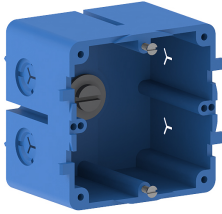


Date: 24.04.2026

## Junction box for wall duct single GDS 50-1 for FB/BR mit DIN-rail



### Product description

Halogen-free flush-mounting box to accommodate one commercially available device unit from the standard switch range, with feed openings for cable diameters of 7-13mm, for installation in wall trunking and installation trunking with a DIN rail and a height of 60 mm.

### Basic data

Item number	1268
Product group	20-Wall installation
Packing unit	48 pieces
EAN code	4018475012684
Tariff number	39269097

### Technical features

Number of units	1
Mounting method box	rear panel
Model	open
Type of device	other
Mounting track	83.5 mm
Mounting method installation unit	crew
Strain relief possibility	yes
With connection space	no
Material	plastic
Halogen free	no