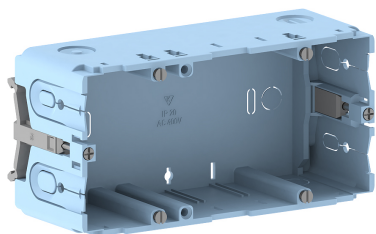


Date: 20.04.2024

## Junction box for wall duct double GED 50-2 for BR/BRA/FB height 60mm with DIN-rail

**Product description**

Halogen-free flush-mounted box for accommodating two commercially available device units from the standard switch range (2 single installation devices or one multiple socket outlet), with strain-relief feed openings for cable diameters of 7-11mm and 11-13mm, for installation in wall trunking and installation trunking with a DIN rail and a height of 60 mm.

**Basic data**

Item number	1280
Product group	20-Wall installation
Packing unit	20 pieces
EAN code	4018475012806
Tariff number	39269097

**Technical features**

Model	open
Number of units	2
Type of device	with bearer ring/bearer bracket
Material	plastic
Mounting method installation unit	screw
Strain relief possibility	yes
With connection space	yes
Mounting method box	Rückwand
Mounting track	other