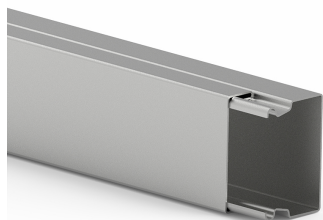


Date: 09.05.2025

Installation trunking LFS 40x60, steel, without base perforation, zinc

**Product description**

installation trunking made of sheet steel according to DIN EN 50085-2-1 for cable routing on walls and ceilings, consisting of completely overlapping cover and base. (Lower sections available with floor perforation and permanently welded partition wall on request) Freely movable cable clips must be ordered separately. Note: Potential equalisation, earthing, sound and fire protection measures must be carried out professionally.

Basic data

Item number	2300
Product group	10-Cable routing
Packing unit	12 meters
EAN code	4018475023000
Tariff number	73089059

Technical features

Height	40 mm
Width	60 mm
Length	2000 mm
Useful cross section	2301 mm ²
Material	steel
Material quality	other
Halogen free	yes
Surface protection	pre-galvanised
Colour	other
Number of permanent partitions	0
Number of plug-in partitions	0
Type of fastening	other
Cover model	loose
With cable fixing clip	no
With protective foil	no