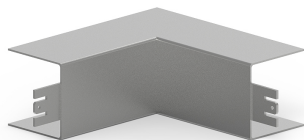


Date: 24.04.2026

## Inner corner LFS 40x40, steel, zinc

**Product description**

Internal corner as moulded hood for installation trunking, for corner bypass in rooms.

**Basic data**

Item number	2743
Product group	10-Cable routing
Packing unit	1 piece
EAN code	4018475027435
Tariff number	73089059

**Technical features**

Height	40 mm
Width	40 mm
Model	Moulded hood
Angle	from 90 to 90 °
Material	Steel
Material quality	other
Halogen free	yes
Anti-bacterial treatment	no
Surface protection	continuously galvanised
Suitable for circuit integrity	no
Type of fastening	snap on
Colour	zinc
Degree of protection (IP)	IP30
With protective foil	no
Impact strength	IK08
Operating temperature	from -5 to 60 °C