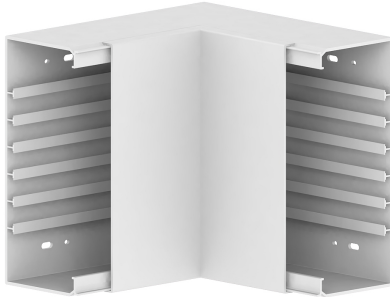


Date: 26.04.2026

Inner corner FB 100x230-9010, PVC, mitre moulding, pure white

Product description

Internal corner 90°, from the basic profile of the installation trunking made of PVC, for corner bypass in rooms, side length: 200 mm.



Basic data

Item number	14115
Product group	10-Cable routing
Packing unit	1 piece
EAN code	4018475253858
Tariff number	39259020

Technical features

Height	62 mm
Width	40 mm
Model	Base unit and cover
Angle	from 90 to 90 °
Material	plastic
Material quality	other
Halogen free	no
Anti-bacterial treatment	no
Surface protection	untreated
Suitable for circuit integrity	no
Type of fastening	snap on
Colour	white
RAL-number	9010
Degree of protection (IP)	IP30
With protective foil	no
Impact strength	IK07
Operating temperature	from -5 to 60 °C