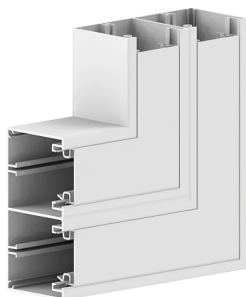


Date: 24.04.2026

Flat angle MBR 65x130/45-9010, PVC, mitre moulding, pure white



Product description

Flat angle, from the basic profile of the wall duct made of PVC, for cable laying with a 90° change of direction on the wall, side length: 200 mm.

Basic data

Item number	7981
Product group	20-Wall installation
Packing unit	1 piece
EAN code	4018475341241
Tariff number	39259020

Technical features

Width	130 mm
Depth	65 mm
Number of covers	2
Cover width 1	45 mm
Cover width 2	45 mm
Direction	Rising/descending
Symmetric	yes
Model	Base unit and cover
Angle	from 90 to 90 °
Material	plastic
Material quality	Polyvinyl chloride (PVC)
Halogen free	no
Anti-bacterial treatment	no
Surface protection	untreated
Colour	white
RAL-number	9010
With protective foil	no
With duct connector	no
Mounting perforation in bottom	yes
Mounting method cover	Inner lying
With cable fixing clip	no
Degree of protection (IP)	IP30
Impact strength	IK10
Operating temperature	from -5 to 60 °C