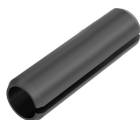


Date: 27.04.2024

## Connecting pin Ø=4 mm, L=12 mm, made of spring steel, for MBRA 62x62/45

**Product description**

Clamping sleeve as assembly aid and for easy connection of two wall trunking bases MBRA 62x62/45, diameter: 4 mm, length: 12 mm.

**Basic data**

Item number	3000
Product group	50-Installation accessories
Packing unit	20 pieces
EAN code	4018475297814
Tariff number	73182900

**Technical features**

Suitable for wall duct width	62 - 62 mm
Suitable for depth of wall duct	62 mm
Construction type	pin
Model	universal
Material	steel
Halogen free	yes