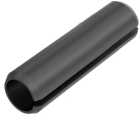


Date: 24.04.2026

## Connecting pin $\tilde{A}=4$ mm, L=12 mm, made of spring steel, for MBRA 62x62/45

### Product description

Clamping sleeve as assembly aid and for easy connection of two wall trunking bases MBRA 62x62/45, diameter: 4 mm, length: 12 mm.



### Basic data

Item number	3000
Product group	50-Installation accessories
Packing unit	20 pieces
EAN code	4018475297814
Tariff number	73182900

### Technical features

Suitable for wall duct width	from 62 to 62 mm
Suitable for depth of wall duct	62 mm
Construction type	Pin
Model	Universal
Material	Steel
Material quality	other
Halogen free	no
Degree of protection (IP)	IP30
Impact strength	IK07
Surface protection	untreated
Colour	other