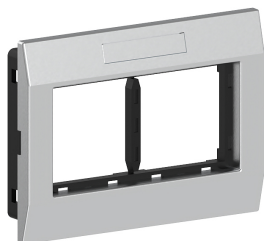


Date: 24.04.2024

Adapter frame double AR-2H-9006, front-locking, BR/BRA, 45x45 mm, alu

**Product description**

Double mounting frame for accommodating compact M45 built-in devices in 45x45 mm format (2 single installation devices or one multiple socket outlet), consisting of mounting support and cover frame with labelling field 8x40mm, for installation in wall trunking and service poles with a 76.5 mm wide fixing track, for vertical device installation.

Basic data

Item number	4671
Product group	20-Wall installation
Packing unit	1 piece
EAN code	4018475289468
Tariff number	85381000

Technical features

Model	open
Number of units	2
Type of device	grid size 45
Material	plastic
Mounting method installation unit	snap
With connection space	no
Mounting method box	Front
Mounting track	76,5 mm