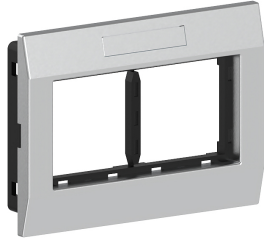


Date: 01.12.2025

Adapter frame double AR-2H-9006, front-locking, BR/BRA, 45x45 mm, alu



Product description

Double mounting frame for accommodating compact M45 built-in devices in 45x45 mm format (2 single installation devices or one multiple socket outlet), consisting of mounting support and cover frame with labelling field 8x40mm, for installation in wall trunking and service poles with a 76.5 mm wide fixing track, for vertical device installation.

Basic data

| | |
|---------------|----------------------|
| Item number | 4671 |
| Product group | 20-Wall installation |
| Packing unit | 1 piece |
| EAN code | 4018475289468 |
| Tariff number | 85381000 |

Technical features

| | |
|-----------------------------------|--------------|
| Model | open |
| Number of units | 2 |
| Type of device | grid size 45 |
| Material | plastic |
| Mounting method installation unit | snap |
| With connection space | no |
| Mounting method box | Front |
| Mounting track | 76,5 mm |