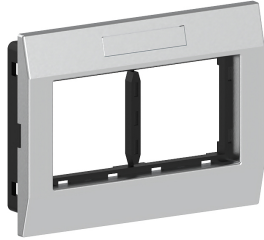


Date: 24.04.2026

Adapter frame double AR-2H-9006, front-locking, BR/BRA, 45x45 mm, alu



Product description

Double mounting frame for accommodating compact M45 built-in devices in 45x45 mm format (2 single installation devices or one multiple socket outlet), consisting of mounting support and cover frame with labelling field 8x40mm, for installation in wall trunking and service poles with a 76.5 mm wide fixing track, for vertical device installation.

Basic data

Item number	4671
Product group	20-Wall installation
Packing unit	1 piece
EAN code	4018475289468
Tariff number	85381000

Technical features

Number of units	2
Mounting method box	front
Model	open
Type of device	other
Mounting track	83.5 mm
Mounting method installation unit	snap
Material	plastic
Halogen free	no